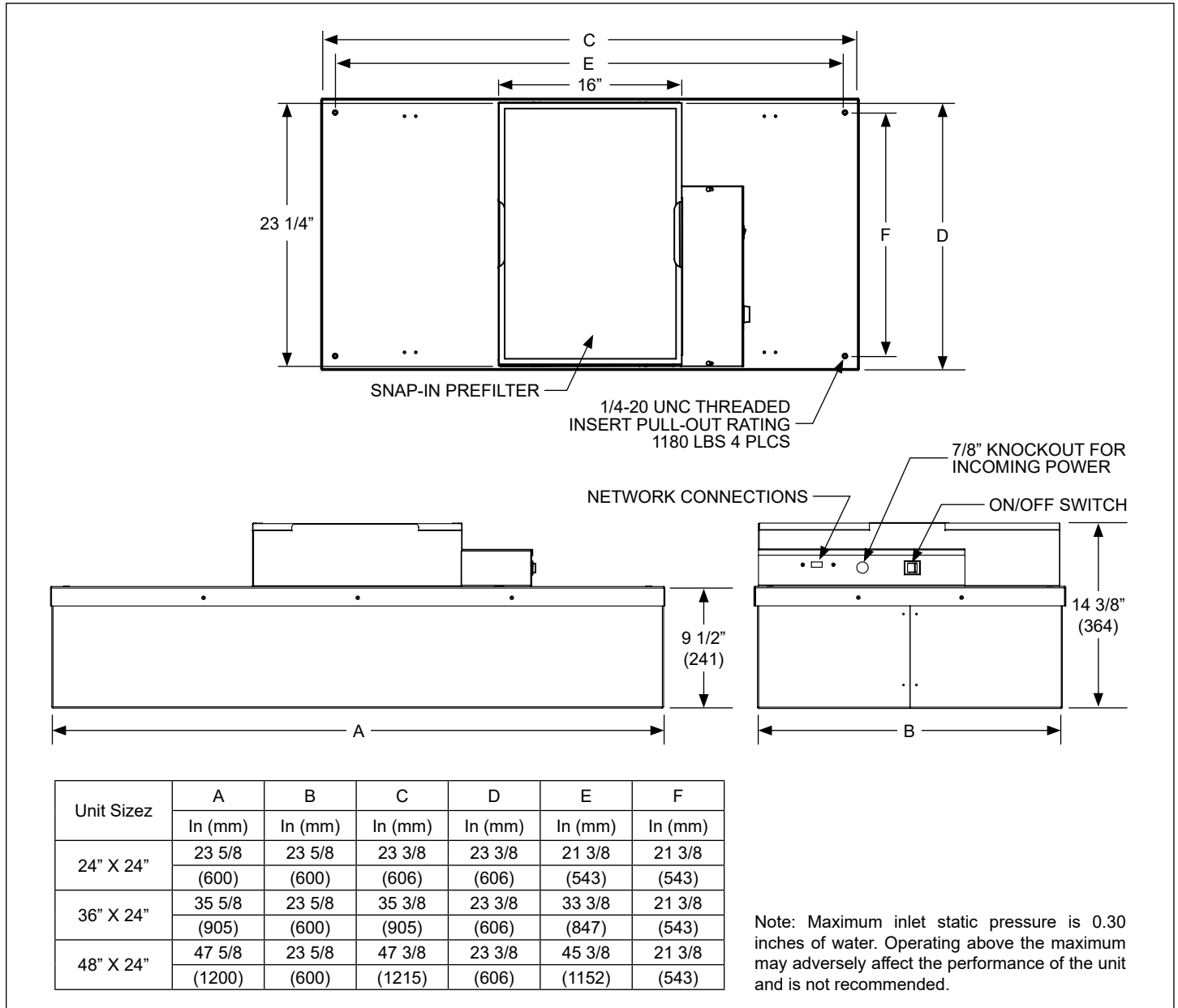


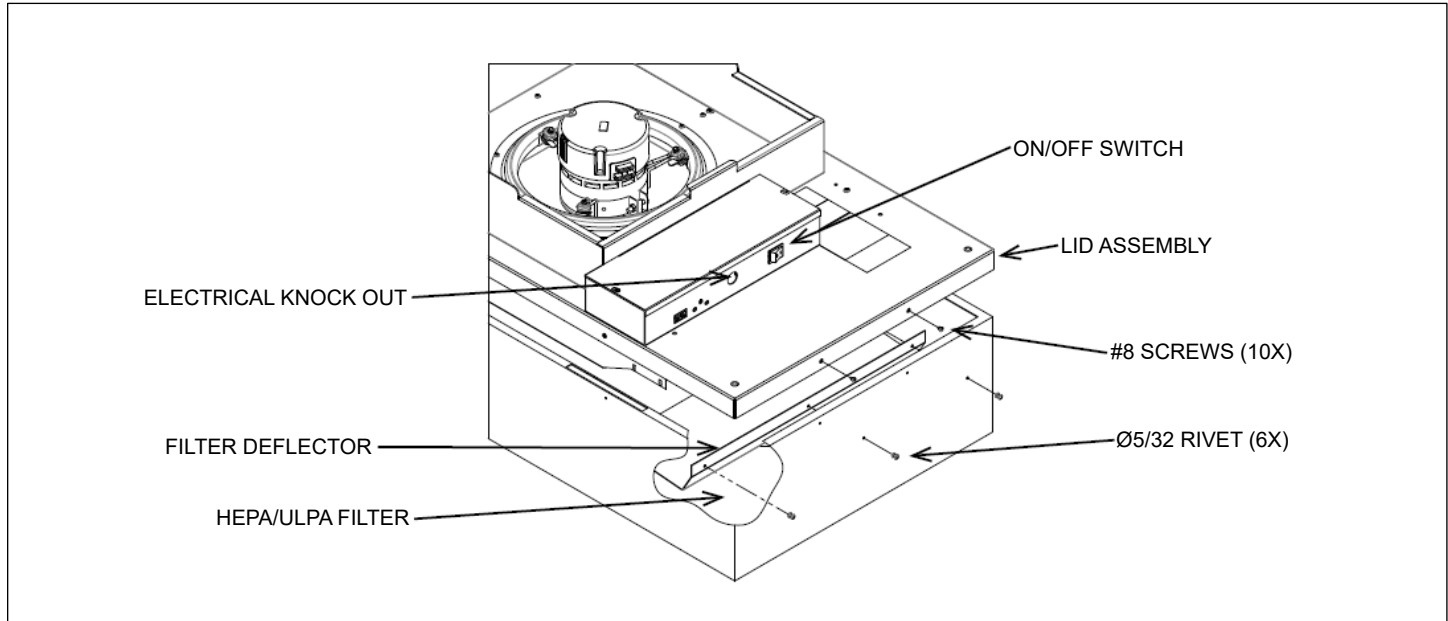
FFDE • Fan Filter Diffusers • ECM Motor • Forward Inclined Fan



## General Description

- Titus Fan Filter Diffusers provide constant unidirectional airflow to occupied space
- FFDE offers high performance, low energy usage & low noise levels for use in cleanroom applications
- Low profile design is great for applications with limited ceiling plenum space
- Walkable plenum (excluding pre-filter), rated at 250 lbs
- EC motor with universal control card
- Forward curved centrifugal fan
- Snap-in prefilter allows for easy replacement and maintenance
- Tested to IEST recommended standards
- UL 507 Listed with standard UL 900 filters

## HEPA filter, Pre-filter &amp; Lid assembly



## Basic Unit Configuration

Check ☒ if provided.

### Module Size

- ☐ 24" x 24"  
☐ 36" x 24"  
☐ 48" x 24"

### Duct Collar

- ☐ None  
☐ 10" Inlet (Shipped Loose)  
☐ 12" Inlet (Shipped Loose)

### Unit Construction

- ☐ Aluminum Face & Plenum  
☐ Stainless Steel Face / Aluminum Plenum  
☐ Stainless Steel Face & Plenum

### Finish

- ☐ #04 Mill Finish  
☐ #26 White

### Motor Type

- ☐ 115V/ 60 Hz/ 1 Phase ; FLA = 5.0A  
☐ 208-240V/ 50/60 Hz/ 1 Phase ; FLA = 3.0A  
☐ 277V/ 60 Hz/ 1 Phase ; FLA = 2.5A

### Control Type

- ☐ Universal Control Card (Constant CFM standard)  
☐ TRQ - Low Air Flow / Constant Torque  
☐ RPN - Constant Speed  
☐ Remote Mounted VCU Control  
     - Must order 11166-001 separately  
     - Each unit requires qty 1 for control  
☐ Infrared Speed Controller  
     - Remote PN 63760 sold separately  
     - Required qty 1 to adjust airflow on multiple units

### Filter Type

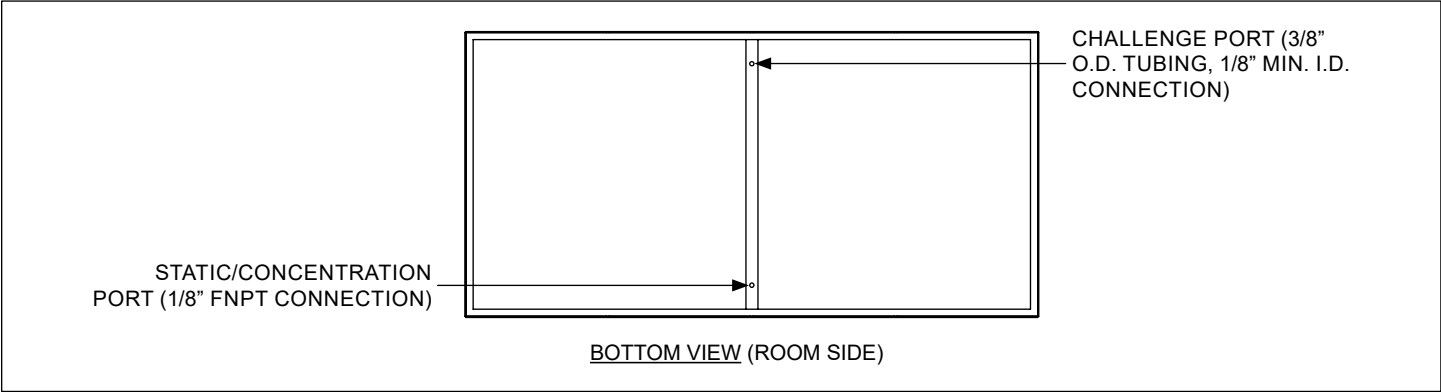
- ☐ HEPA (99.99%@0.3 micron)  
☐ ULPA (99.9995%@0.12 micron)

## Accessories (Optional)

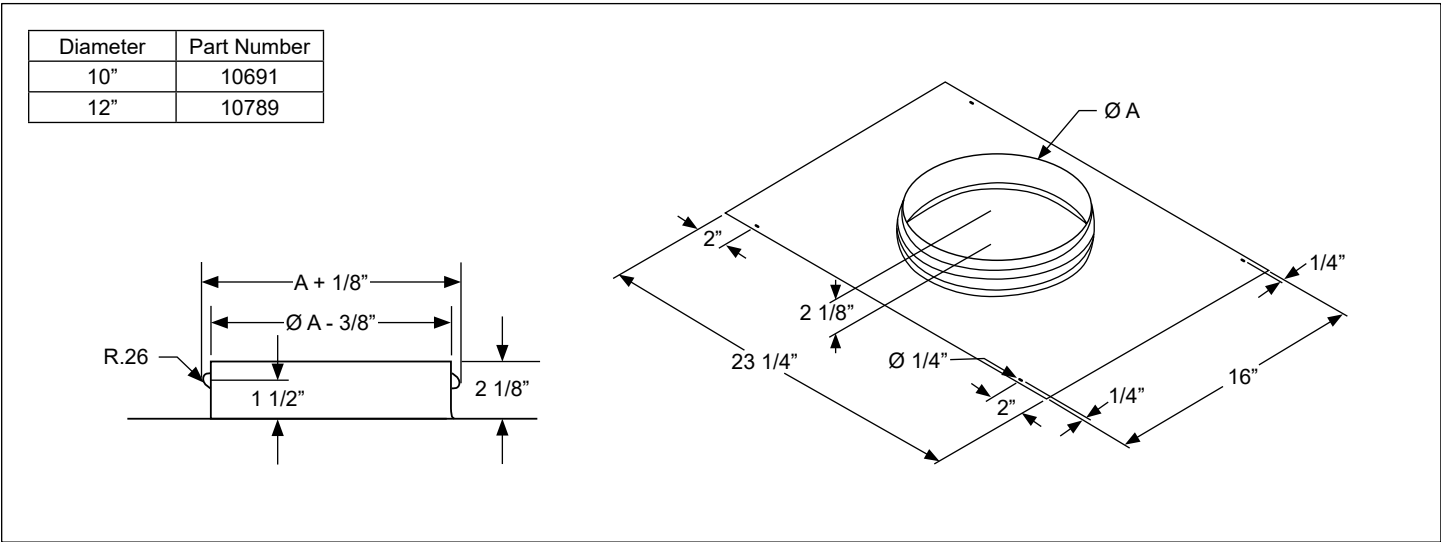
Check ☒ if provided.

- ☐ Aerosol Challenge Port  
☐ Surface Mount Adapter  
☐ Insulation  
☐ Continuous Filter Monitoring (0-10 V signal)

Challenge/Concentration Port Detail



Inlet Adapter Accessory Detail



Surface Mount Adapter Accessory Detail

